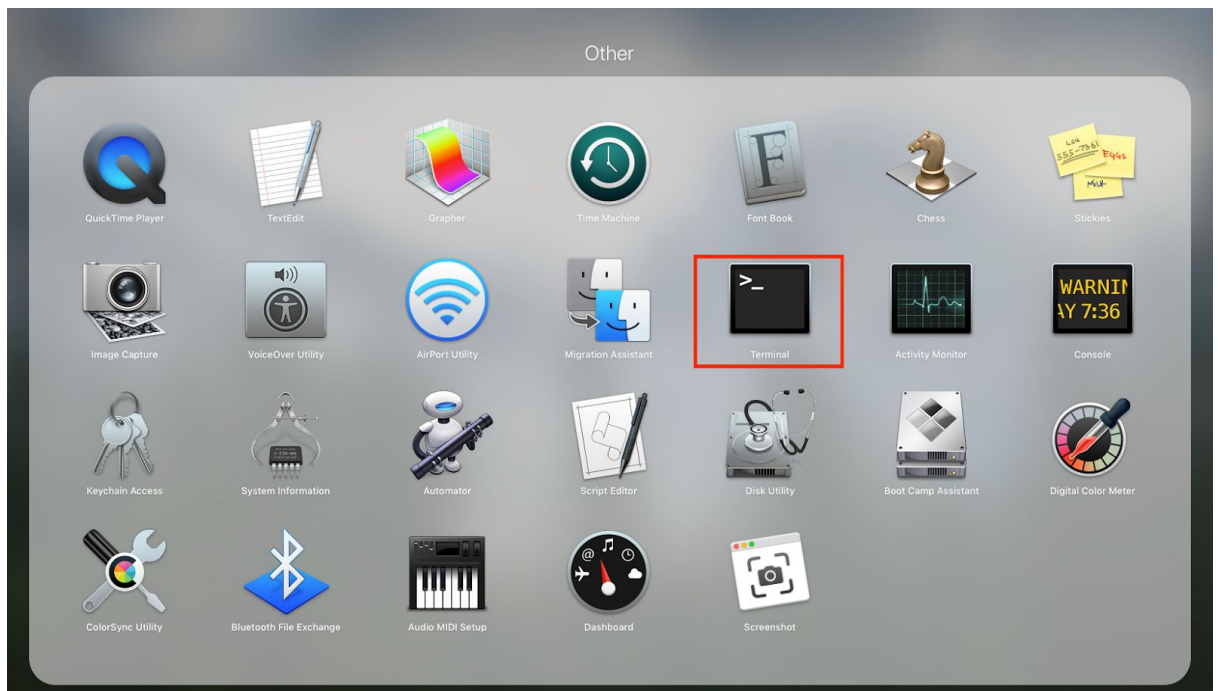


# Gcube-102 CUPS USB Driver Install Guide

Document V1.0

1. Open Terminal.



2. Change to "root" account.

```
# sudo -s
```

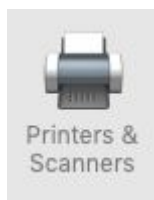
3. run "./cli\_installer\_mojav"

```
[bash-3.2# ./cli_installer_mojav 383 bytes
=====
| This installer for OSX SAM4s Printer Driver.
| It must be run su account for system installation.
| Software version : V0.2b 230 bytes
=====
./RasterToSAM4S -> /usr/libexec/cups/filter/RasterToSAM4S
./SAM4s_Gcube102.ppd -> /Library/Printers/PPDs/Contents/Resources/S
.ppd
019 at 9:08 AM
Install Completed
19 at 8:59 AM
[bash-3.2#
bash-3.2# 19 at 7:08 PM
```

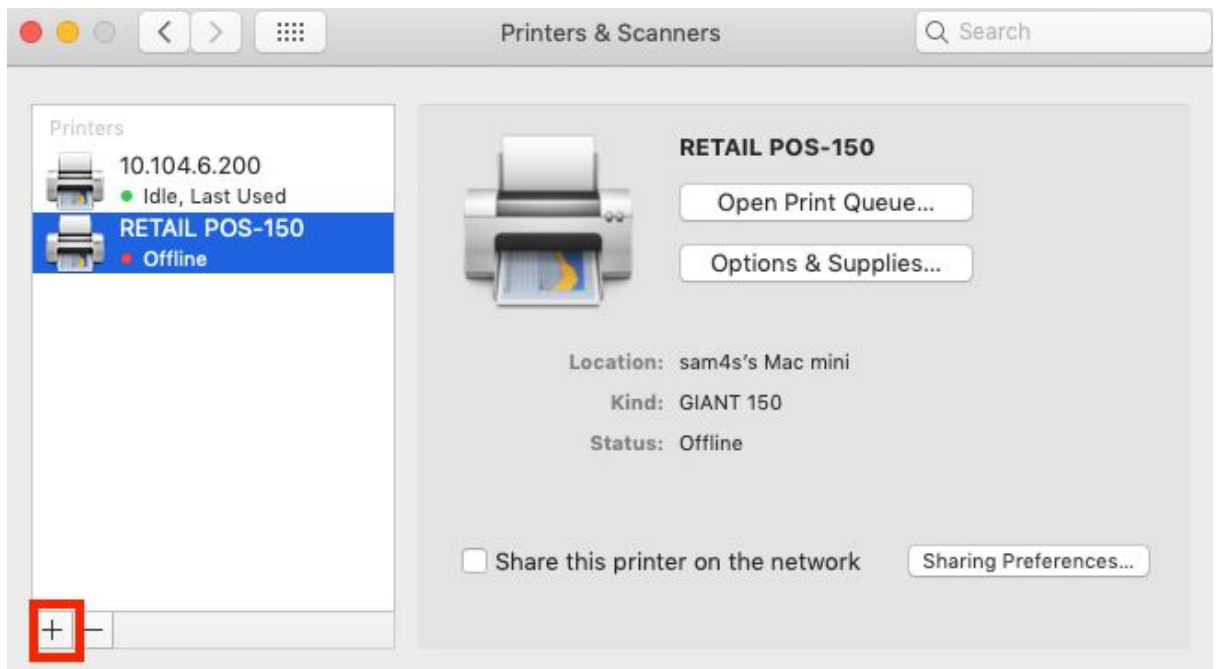
4. Open Setting.



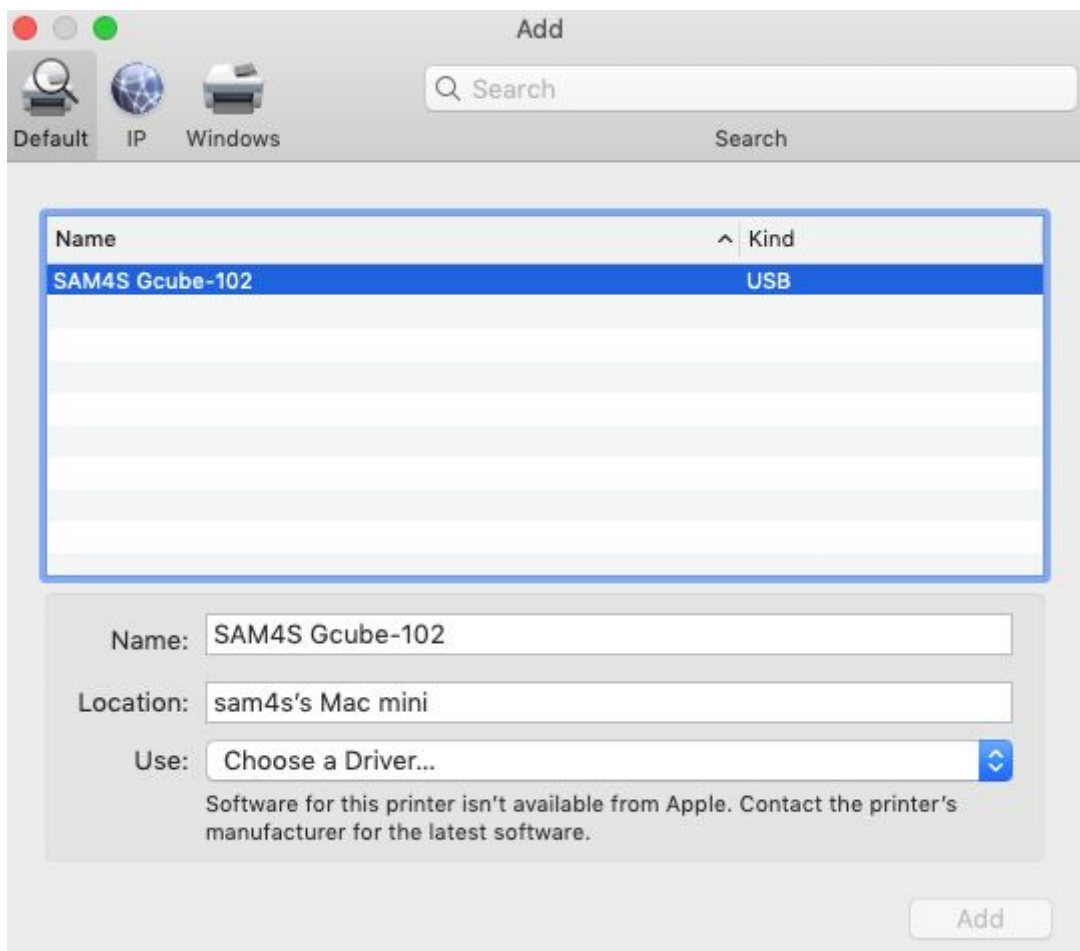
5. Select Printers & Scanners.



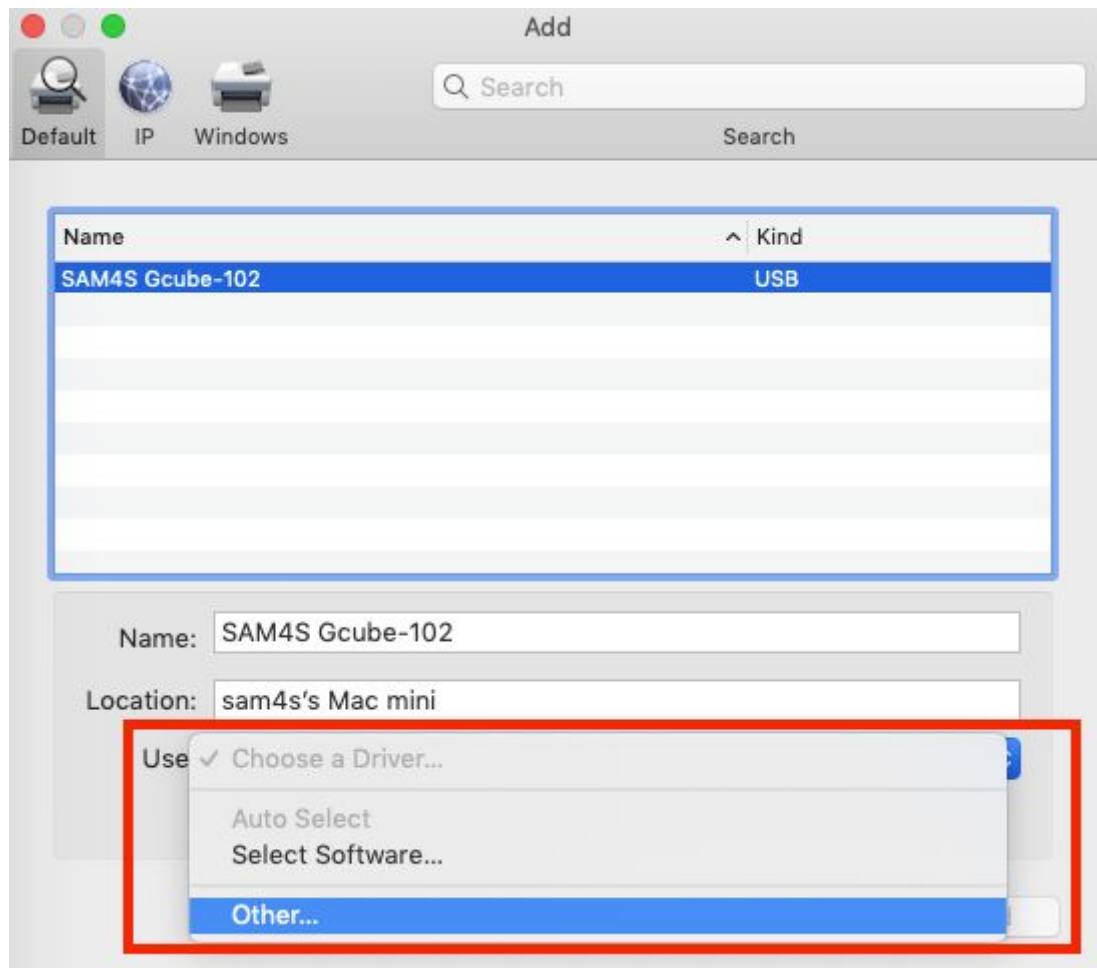
6. Click [+] to add printer.



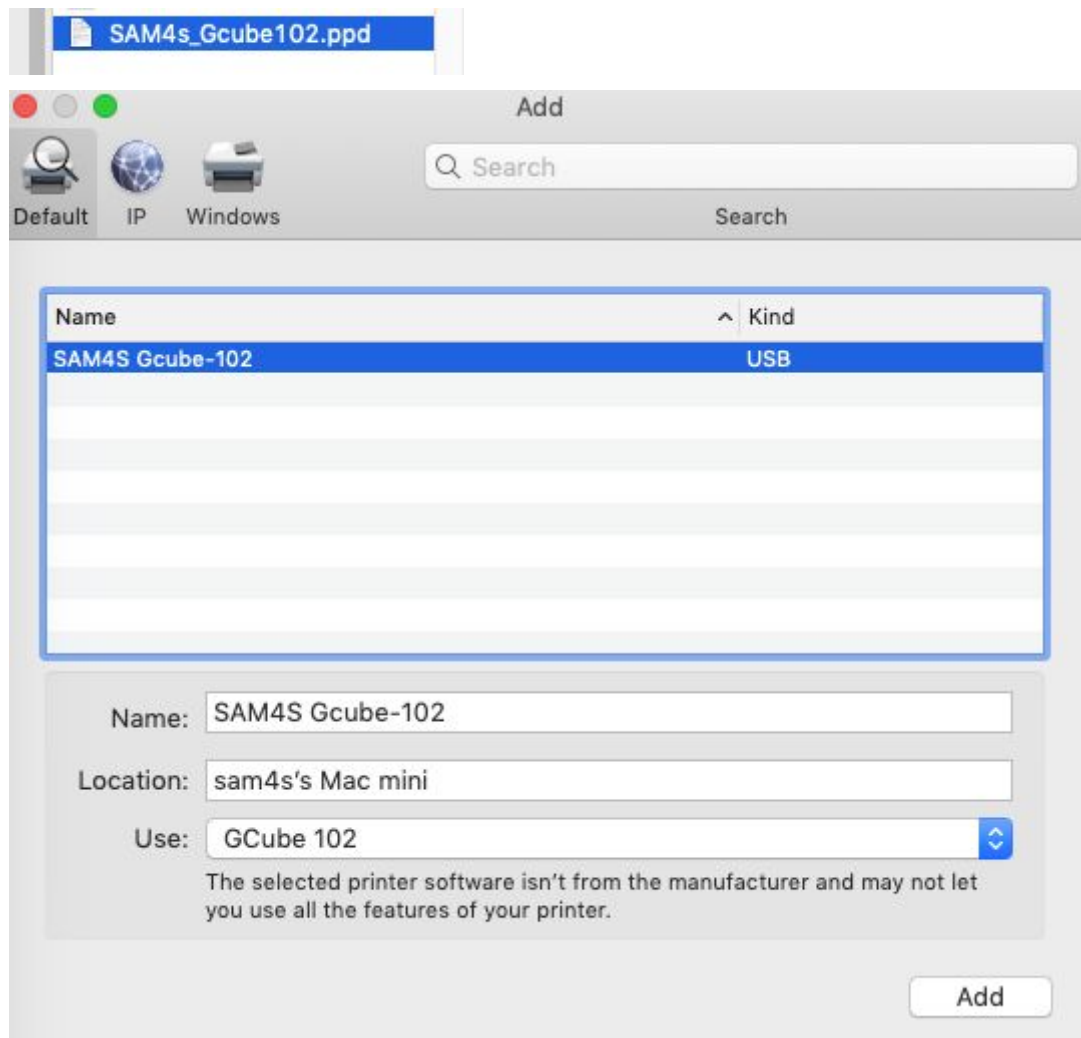
7. Select "SAM4S Gcube-102".



8. Select “Other...” on Use.

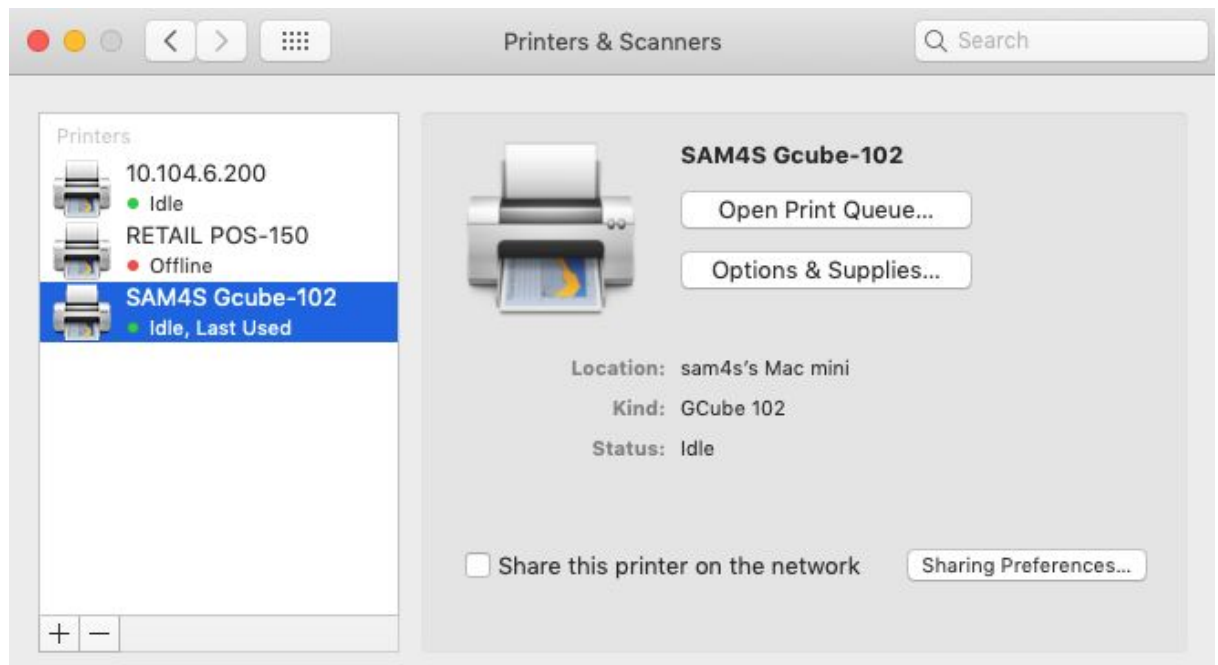


9. Select “SAM4s\_Gcube102.ppd” and open.



10. Click “Add”

11. Done. and you can see the given name.



-Thank you-